

## Accessing Wireless Guest Services

1. Connect to the wireless network. The SSID name will be the name of the library.
2. If you are using any wireless security management software, it may interfere with your ability to connect to and use the wireless services and must be configured accordingly.
3. Once connected, open a web browser. After a few moments, you will be redirected to a secure login page. You may receive one of the following security warnings:

In Internet Explorer 6, click **Yes** to continue.



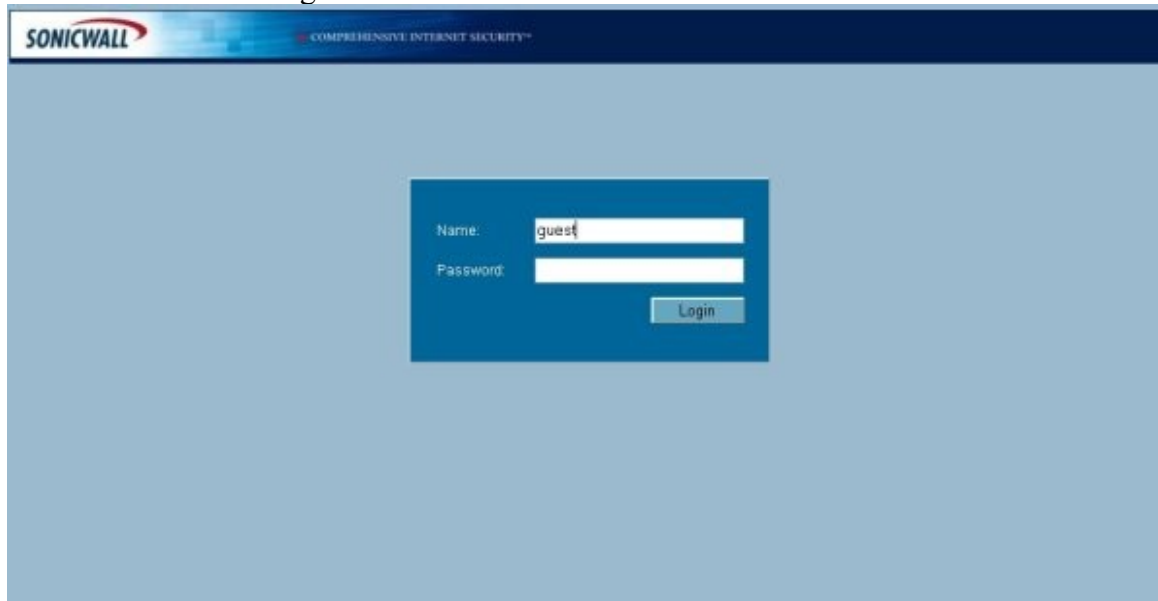
In Internet Explorer 7, click "**Continue to this website**"

A screenshot of an Internet Explorer 7 security warning page. At the top left is a red shield icon with a white 'X'. The main heading is "There is a problem with this website's security certificate." Below this, there is a horizontal line and the text: "The security certificate presented by this website was not issued by a trusted certificate authority." and "The security certificate presented by this website was issued for a different website's address." Further down, it says: "Security certificate problems may indicate an attempt to fool you or intercept any data you send to the server." A bold recommendation follows: "We recommend that you close this webpage and do not continue to this website." Below the recommendation are three options: a green checkmark icon followed by "Click here to close this webpage.", a red 'X' icon followed by "Continue to this website (not recommended).", and a blue circle with a downward arrow followed by "More information".

In Firefox, select "**Accept this certificate temporarily for this session**", then click **OK**.



4. You will be shown a login box.

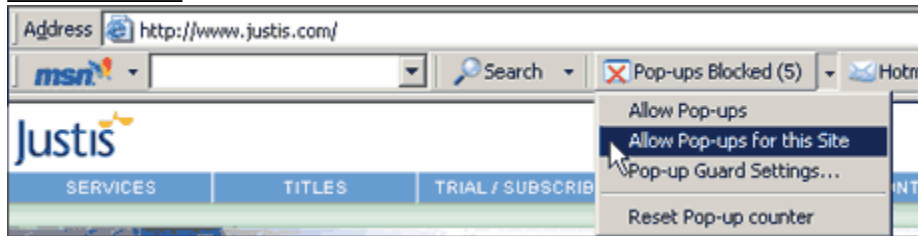


5. Before logging in, temporarily disable all pop-up blockers.  
In **Firefox** : On the Menu bar, click *Tools, Options, Content*. Uncheck the box labeled "*Block pop-up windows*".  
In **Internet Explorer** : Click *Tools, Pop-up Blocker, Turn off pop-up blocker*.  
If you use any third party toolbars, you will also need to disable pop-ups on those.

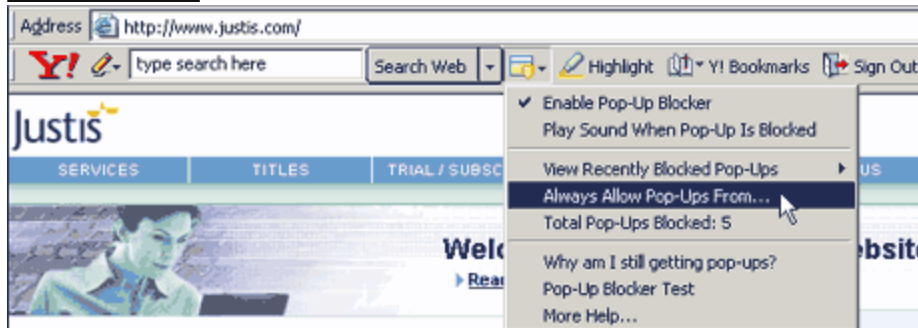
### Google toolbar



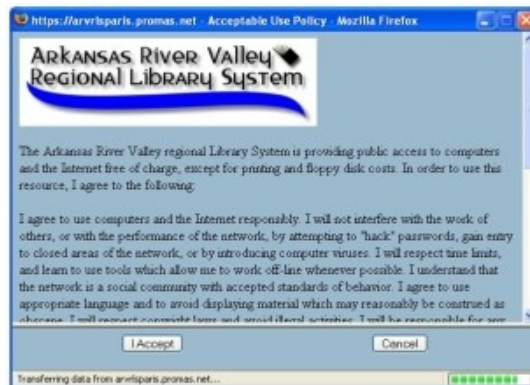
### MSN toolbar



### Yahoo toolbar



6. Login with username **Guest**. The password will be supplied to you by library staff.
7. Accept the **Terms of Use**.



8. Once logged in, you will see a session tracking box with a **logout** button on it. Minimize this box until you are finished using the Internet. Once finished, click the **Logout** button.

